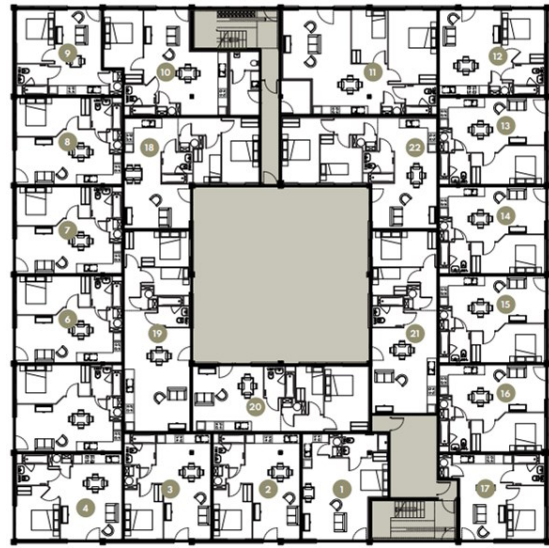




Springfield House | Ashwood Park | Ashwood Way | RG23 8BG

£1,025 PCM

*Waterfords*   
Residential Sales & Lettings



Energy Efficiency Rating		
	Current	Potential
Very energy efficient - lower running costs		
(92 plus) A		
(81-91) B		
(69-80) C		
(55-68) D	62	62
(39-54) E		
(21-38) F		
(1-20) G		
Not energy efficient - higher running costs		
England & Wales	EU Directive 2002/91/EC	



## Description

Property Summary – Springfield House, Ashwood Park, Basingstoke

A well-presented one-bedroom apartment available to let from February 2026, located in the desirable Ashwood Park development. The property offers a bright open-plan living space, a modern fitted kitchen, spacious double bedroom and a contemporary bathroom. Residents benefit from well-kept communal areas and convenient access to local shops, transport links and Basingstoke town centre. Ideal for a professional single or couple seeking comfortable, modern living.

## Key features

- One Bedroom Apartment to rent
- Water & electric separately metered
- Intergrated fridge freezer, dishwasher, ceramic hob & electric oven
- Rain shower & heated towel rail
- Smart Parcel drop box facility & On-site manager 's office.
- Combination blinds partial or full black-out
- Lightning fast Fibre Broadband plus TV, telephone & Sky Q points.
- LED mirror with shaver socket & demister function
- Onsite parking included in the rent
- Available February 2026



39 The Hart Centre  
Fleet  
Hampshire  
GU51 3LA  
01252 623330

[hampshirelettings@waterfords.co.uk](mailto:hampshirelettings@waterfords.co.uk)  
<https://www.waterfords.co.uk/>